

# Telugu Alphabets

## తెలుగు అక్షరమాల

### Vowels(16)

అ



అమ్మ

Amma = Mother

ఆ



ఆవు

Aavu = Cow

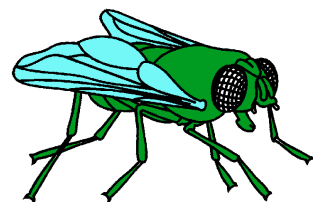
ఇ



ఇల్లు

Illu = House

ఈ



ఈగ

Eega = Fly

ఉ



ఉడుత

Udutha = Squirrel

ఊ



ఊయల

Ooyala = Swing

ఋ



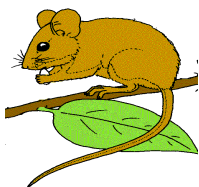
ఋషి

Rushi = Sage

ఋ

ఋ

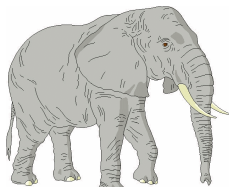
ఎ



ఎలుక

Eluka = Rat

ఏ



ఏనుగు

Aenugu = Elephant

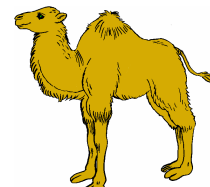
ఐ



ఐదు

Aidu = Five

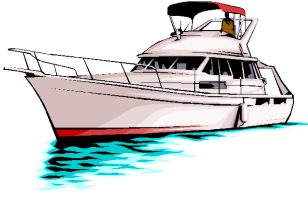
ఒ



ఒంటె

Onte = Camel

ఓ



ఓడ

Ooda = Ship

ఔ



ఔషదం

Owshadam =  
Medicine

అం



అంబ

Amba = Goddess  
Durga

అః



నమః

Namaha =  
Salutation

Consonants(36 )

క



కలం

Kalam = Pen

ఖ



ఖడ్గం

Khadgam = Sword

గ



గడియారం

Gadiyaram = Clock

ఘ



ఘంట

Ghanta = Bell

జ

చ



చందమామ

Chandamama =  
Moon

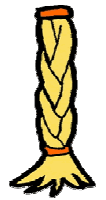
ఛ



ఛత్రం

Chhathram =  
Umbrella

జ



జడ

Jada = Hair

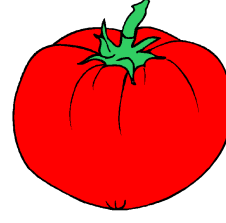
ఝ



ఝండ

Jhanda = Flag

త



టమాట

Tamaata = Tomato

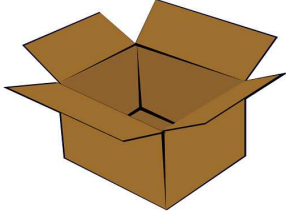
ఠ



మీఠాయి

Mitae = Sweet

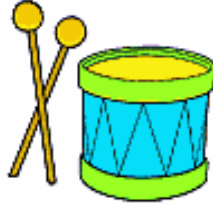
డ



డబ్బ

Dabba = Box

ఢ



ఢంక

Ddamka = Drum

ణ



కంకణం

Kankanam =  
Bracelet

ఠ



ఠల

Thala = Head

ఢ



ఠఢం

Rathham = Chariot

ఢ



ఢీపం

Deepam = Lamp

ఢ



ఢనసు

Dhanassu = Bow

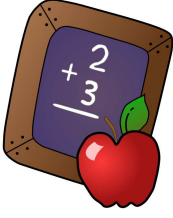
ఠ



ఠత్త

Nattha = Snail

ప



పలక

Palaka = Slate

ఫ



ఫలం

Phalam = Fruit

బ



బంతి

Banthi = Ball

భ



భల్లూకం

Bhallookam =  
Bear

మ



మంచం

Mancham = Bed

య



యంత్రం

Yantram=Machine

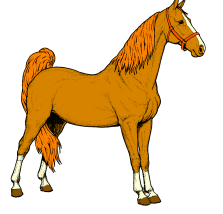
ర



రంపం

Rampam = Saw

ఱ



గుఱ్ఱం

Gurram = Horse

ల



లత

Latha = Creeper

శ



కుశాయి

Kulaayi = Tap

వ



వంతెన

Vanthena = Bridge

శ



శంకం

Shamkam = Shell

ష



ఔషదం

Owshadam =  
Medicine

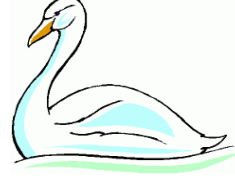
స



సంచి

Sanchi = Bag

హ



హంస

Hamsa = Swan

క్ష



క్షత్రియుడు

Kshatriyudu =  
Soldier